
TKO



OPERATING MANUAL

ILCO TECHNICAL SUPPORT DEPT.
400 Jeffreys Rd., Rocky Mount, NC 27804

Tel: (800) 334-1381, Option 8
Fax: (800) 446-4702



(c) 2006 Kaba Ilco Corp. - Rocky Mount, NC
All Rights Reserved

INDEX

1	MACHINE DESCRIPTION	5
1.1	MAIN CHARACTERISTICS	5
1.2	TECHNICAL DATA	6
1.3	WORKING PARTS	6
1.4	SYMBOLS	8
2	TRANSPORT	8
2.1	PACKING.....	8
2.2	UNPACKING	9
2.3	HANDLING	9
3	ACCESSORIES PROVIDED	9
4	INSTALLATION AND PREPARATION	9
4.1	PREPARATION FOR USE - INITIAL OPERATIONS	9
4.2	CHECKING FOR DAMAGE	9
4.3	ENVIRONMENTAL CONDITIONS	9
4.4	SOFTWARE UPDATING.....	10
5	REGULATION AND GAUGING	10
6	USING THE MACHINE	10
6.1	START-UP	10
6.2	PASSWORD.....	10
6.2.1	PASSWORD (MEMORIZED)	11
6.3	MAIN MENU	11
6.4	IMMOBILIZER MENU / REMOTE CONTROLS.....	12
6.4.1	SELECTING THE CAR MAKE	12
6.4.2	CAR MODEL NOT ENABLE.....	12
6.4.3	CAR MODEL ENABLED.....	13
6.4.4	COMMUNICATION PROCEDURE WITH THE IMMOBILIZER	13
6.5	PIN CODE READING	13
6.5.1	DISABLED VEHICLE MODEL.....	13
6.5.2	ENABLED VEHICLE MODEL.....	14
6.5.3	COMMUNICATION PROCEDURE FOR PIN CODE READING	14
6.6	7-4 PIN CONV.	14
6.6.1	PIN 7	14
6.6.2	DEALER.....	15
6.6.3	IMPORTER	15
6.6.4	PIN 4	15
6.7	SETUP	16
6.7.1	ENABLING	16
6.7.2	LANGUAGE.....	18
6.7.3	SERIAL NUMBER	18
6.7.4	CLOCK.....	18
6.7.5	VERSION	19
6.7.6	MEMORIZE PASSWORD.....	19
6.7.7	KEYS REFERENCES	19
6.8	ARCHIVE	19
6.8.1	SEARCH	20
6.8.2	PRINTOUT	21
6.8.3	ARCHIVE ERASE.....	21
6.9	TEST	21
6.9.1	KEYBOARD	21
6.9.2	TEXT	22
6.9.3	GRAPHICS	22
6.9.4	UPDATE SWITCH CAN	22
7	WARNING/ERROR MESSAGES	22
8	HELP MENU	29
9	MAINTENANCE	31
9.1	CHECKING WIRING.....	31
10	WASTE DISPOSAL	31
11	ASSISTANCE	32
11.1	HOW TO REQUEST SERVICE	32

GENERAL

The device is designed to the principles of European CE Directives. The materials used in its manufacture are not dangerous and their use complies with directives. Its design features make the machine and all its components completely safe to use.

FURTHER RISKS

There are no further risks arising from the use of the machine.

PROTECTION AND SAFETY PRECAUTIONS FOR THE OPERATOR

The operations for which the machine has been designed are easily carried out at no risk to the operator.

SAFETY REGULATIONS

To operate under conditions of maximum safety do not use the device without reading and understanding clearly the contents of this operating manual.

- Check the electrical wiring periodically; if the wires are worn they should be repaired or replaced.
- Never work with wet, greasy or oily hands.
- Disconnect the device from the mains when it is not in use or in order to carry out maintenance work.
- Never tug at the power supply wire; make sure it does not come into contact with oil, sharp edges or heat.
- It is dangerous to use the device in areas at risk (damp or wet).
- Always work in a well lighted area.
- Keep the work area clean and remove all tools before turning on the machine.
- All visitors, children in particular, must keep at a safe distance and not touch the machine or electrical wiring.
- Do not use the device for purposes different from those described in the Operating Manual.

POWER SUPPLY

The machine is supplied with electricity at 12 Vdc provided by the vehicle battery, or as an alternative can be powered from a 15 Vdc universal feeder supplied with the machine.

TURNS ON

The machine turns on automatically when the connection (OBD II or Optional) is connected to the diagnostics socket or one of the feeder wires supplied with the machine is used.

IDENTIFICATION OF THE TKO DEVICE

The device has an identification plate showing its serial number (fig. 1).

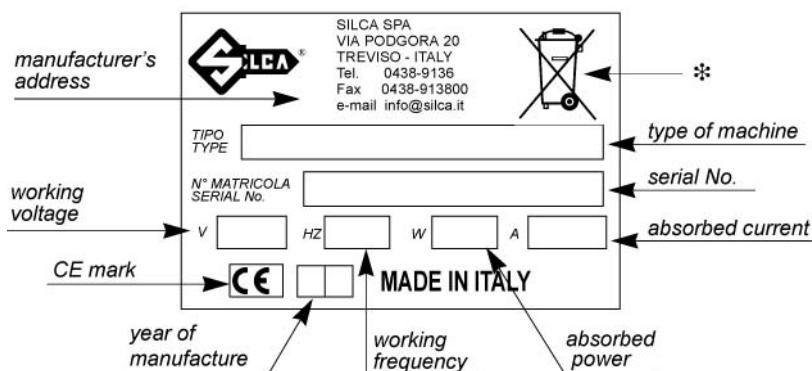


Fig. 1

(*) see chap. 10 "WASTE DISPOSAL", page 32.

1

MACHINE DESCRIPTION

The machine is used to easily program keys with transponders in the centralized immobilizer units of a number of car models.

In particular, it can:

- memorize all the keys in the centralized immobilizer unit;
- erase keys already in the memory;
- read the immobilizer ID code - IMMO ID (if applicable);
- read the mechanical code for the key (if applicable);
- add one or more keys;
- read the number of keys in the memory (if applicable);
- read any errors/anomalies in the centralized immobilizer unit;
- erase/zero any errors found;
- provide help.

The machine is provided with a password to prevent unauthorized use. Users have at their disposal a functions menu to meet all possible requirements during operation.

NOTE: Once the machine is connected to the power mains it's automatically switched on. To turn it off exit from function and unplug the machine from the mains.

1.1

MAIN CHARACTERISTICS

OPERATING METHODS

- Adds or deletes keys from the immobilizer control unit by connecting TKO to the vehicle diagnostics port.

SPECIAL FUNCTIONS

- Storage in the User Data Archive of all operations carried out;
- Multi-language program;
- Machine test;
- Help (operational help for: type and position of connectors, procedures, keys, types of transponders, etc...).

PASSWORD

A principle password is needed to enable the TKO (required every time the program is turned on), issued by the supplier/distributor by means of a special "USE AGREEMENT FORM".

TKO - FULL LOADED CONFIGURATION

Basic software (all makes included at the time of purchase)

- All makes are enabled for use.

Software update (new makes released)

- To use the new makes loaded with the SW update (after purchase) you may proceed in two different ways:

SOFTWARE UPDATE

The machine can be updated through an RS232 serial line connection with a personal computer.

POWER SUPPLY

- From the car through an OBD II connector;
- From the car through the cigarette lighter plug;
- From the mains through a universal feeder and special cable.

1.2

TECHNICAL DATA

POWER SUPPLY

- 8-45 Volt (typically 12Volt from the vehicle diagnostic inlet or cigarette lighter plug).
- Universal feeder:

	INPUT	OUTPUT
Tension	90-264 Vac	15 Vdc
Current	1.0Arms @ 90V	1 A
Frequency	47-63 Hz	
Power		15 W

DIMENSIONS

Length: 220 mm

Width: 165 mm

Height: 50 mm

Weight: 300 g.

1.2

WORKING PARTS

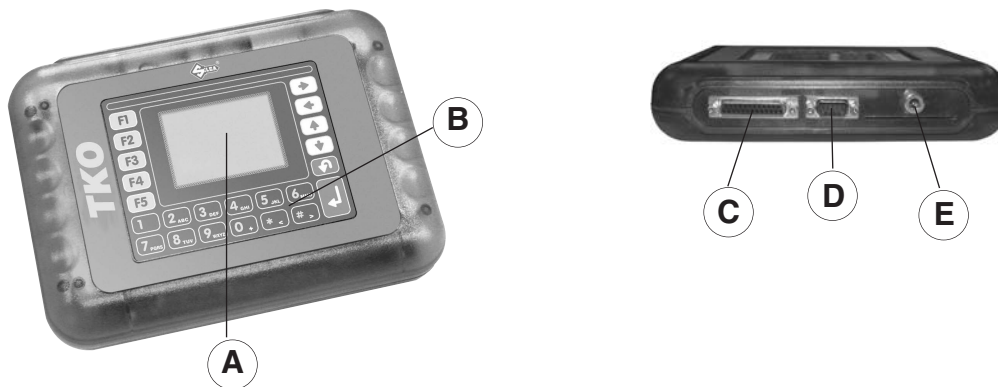
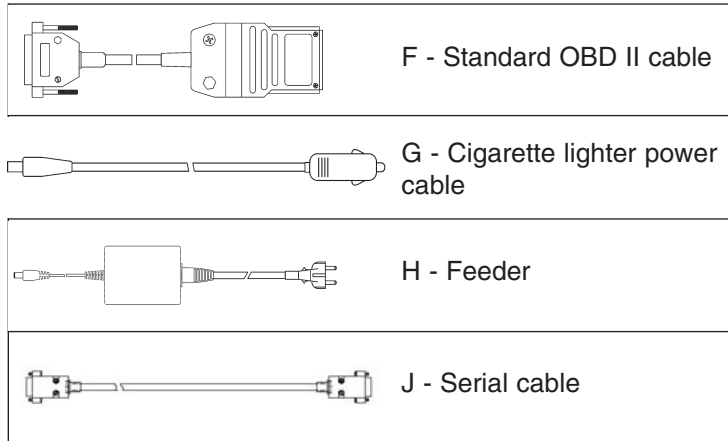


Fig. 2

- A - Retro illuminated LCD graphic display
- B - 23-key keypad (numerical, functions, arrows, ESC, ENTER)
- C - Parallel Port (25 Poles) to communicate with the vehicle
- D - Serial Port RS232 (9 Poles) use only for Serial cable
- E - Socket for cigarette lighter power cable or feeder



MAIN FEATURES

KEYPAD

The machine keypad allows the user to interact with it rapidly and easily. At any given time only the keys involved in the cycle in progress are enabled.

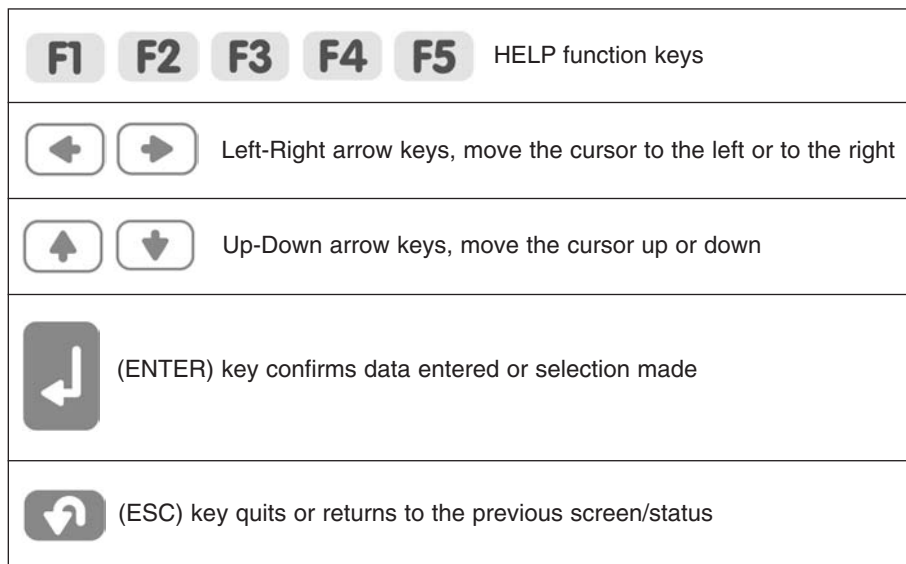


Fig. 3

LIQUID CRYSTAL DISPLAY

Retro illuminated LCD graphic display (128x64 pixel or 21x8 characters).

1.4

SYMBOLS

The box shows the machine screen and relative displays, as shown below:

```
- MAIN MENU -
1 - IMMOBILIZER
2 - REMOTE CONTROLS
3 - PIN CODE READING
> 4 - 7-4 PIN CONV.
5 - SET UP
6 - DATA BASE
7 - TEST
↓↑←→↶↷
```

Methods for selecting a specific function:

- Use the arrow Left/Right keys, the point where the cursor ">" shows the item required, then press **ENTER**;
- Digit a number (xx) from the keypad to access the item required directly from the menu.

```
- MAIN MENU -
1 - KEYBOARD
2 - TEXT
> 3 - GRAPHICAL
4 - UPDATE SWITCH CAN
↓↑←→↶↷
```

Example:

to access the **GRAPHICS TEST** menu (73) either use the arrows to select first the **TEST** menu (7), press **ENTER**, then the **GRAPHICS** menu (3) and press **ENTER**, or digit (73) which corresponds to the **GRAPHICS TEST (73)**.

2

TRANSPORT

The machine and its components are easily transported by one person and its handling does not incur any hazards.

2.1

PACKING

The packing ensures safe transport for the machine and protects all its parts. To avoid knocks damaging the machine, we recommend using the original carrying case and packing every time it is transported.



Fig. 4

2.2

UNPACKING

To remove the machine from its packing:

- 1) take care not to damage the box when opening as it can be used again (transfers, dispatch to the manufacturer for repairs or maintenance).
- 2) check the contents of the packing case, which comprise:
 - 1 carrying case;
 - 1 machine;
 - 1 universal feeder;
 - 1 centralized unit connecting cable (universal), OBDII - 00 connector;
 - 1 serial cable;
 - 1 power supply cable with cigarette lighter plug;
 - 1 set of documents: user's manual, guarantee form and user's agreement;
 - 1 CD program

2.3

HANDLING

Always replace the machine in its carrying case after use.

3

ACCESSORIES PROVIDED

The device comes complete with:

- universal feeder;
- centralized unit connection cable (OBD II-00 connector);
- serial cable;
- power supply cable with cigarette lighter plug;
- CD program (to be used in the event of loss of the program on the machine).

4

INSTALLATION AND PREPARATION

Installation can be carried out by the purchaser and does not require special skills. The machine is supplied ready for use - however, some checks and preparation are necessary before use.

4.1

PREPARATION FOR USE - INITIAL OPERATIONS

- power the machine by means of the supply socket (E);
- check that the serial number stamped on the device is the same as the one shown on the display; enter the password (to enable use) (see chap. 6.2 "PASSWORD", page 8);
- select the language;

4.2

CHECKING FOR DAMAGE

The device will not normally be damaged if transport, unpacking and installation have all been carried out according to the instructions in this manual; however it is always advisable to check that the machine has not suffered any damage. Should faulty operation arise that is not connected with the above-mentioned conditions, please contact After-Sales Service.

4.3

ENVIRONMENTAL CONDITIONS

To ensure that the best use is made of the machine and that the keys with transponders produced work properly, it is important to bear in mind operating conditions and temperature.

Given the characteristics of the transponders on the keys, in order to memorize them, THE TEMPERATURE MUST BE ABOVE 5° C.

Ideal working conditions for the machine are therefore:

- temperature: from 5° to 40° C.

4.4

SOFTWARE UPDATING

The machine software can be updated by connection to a personal computer.

ATTENTION: the RS232 socket for connection to the PC is located on the front, near the display.

Use the RS232 serial cable provided and follow the instructions for updating.

5

REGULATION AND GAUGING

The machine is designed not to require any gauging or regulation.

6

USING THE MACHINE

This chapter describes all the operations required to memorize, erase, or add keys to the centralized immobilizer unit by connecting TKO to the vehicle diagnostics input.

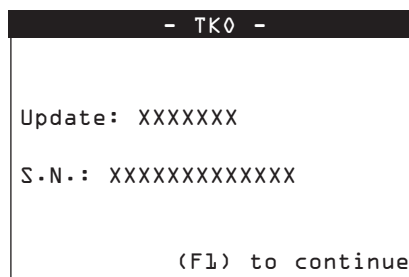
6.1

6.1 START-UP

When the machine is turned on the display shows the logo:



After a few seconds the following message appears:



The words “**Update: XXXXXXXX**” give the level of updating for the program and database.

The words “**S.N.: XXXXXXXXXXXXX**” give the machine serial number.

Check that the serial number shown on the display is the same as that on the document “USER’S AGREEMENT” and on the label attached to the back of the machine.

Press F1 to continue.

6.2

6.2 PASSWORD

When selection has been made, the following message appears:



To use the machine enter the password issued by the supplier/dealer, comprising 8 numerical characters.

- enter the password and press ENTER.

CORRECT PASSWORD

If the password is correct, the message below appears:

```
RIGHT PASSWORD
```

After a few seconds the program enters the main menu.

WRONG PASSWORD

If a wrong password has been entered, a beep advises the user and the display shows:

```
WRONG PASSWORD  
INSERT PASSWORD  
XXXXXXXX
```

- Repeat the operation and press ENTER.

6.2.1

PASSWORD (MEMORIZED)

If the password has already been memorized on the machine (chap. 6.7.6 “MEMORIZE PASSWORD”, page 18), when F1 is selected the following message appears:

```
PASSWORD SAVED
```

Wait a few seconds for the display to show the main menu.

6.3

MAIN MENU

There are two ways to choose the menu:

```
- MAIN MENU -  
1 - IMMOBILIZER  
2 - REMOTE CONTROLS  
3 - PIN CODE READING  
> 4 - 7-4 PIN CONV.  
5 - SET UP  
6 - DATA BASE  
7 - TEST  
↓↑←→↻↺
```

- Use the , arrow keys for selection then press ENTER, or digit the number corresponding to the function.

6.4

IMMOBILIZER MENU / REMOTE CONTROLS

This function contains the database of vehicle makes / models / years for which the device is enabled and can carry out the specific functions involved.

- Select **"IMMOBILIZER/REMOTE CONTROLS"**; from the MAIN MENU to view a list of car makes on the display.

```
- MENU IMMOBILIZER -  
AUDI  
SEAT  
SKODA  
> VOLKSWAGEN  
OPEL  
FORD  
  
↓↑←→↻↺
```

SELECTING THE CAR MAKE

- Use the arrow keys to select the make, then press ENTER.
- Press ESC to quit.

After selecting the make the display will show the list of car models.

```
- VOLKSWAGEN -  
BORA (98- )  
CADDY (95-99)  
CADDY (00- )  
> GOLF (95-99)  
GOLF (00- )  
GOLF CABRIO (95-99)  
  
↓↑←→↻↺
```

FUNCTION F1

Press the **"F1"** key to show information relating to the make/model selected (type and position of connectors, procedures, keys, types of transponder, etc.) (see chap. 8 "HELP MENU", page 29).

6.4.1

SELECTING THE CAR MAKE

TKO is not always able to automatically recognize all the immobilizer central units and is therefore unable to automatically choose the communication procedure to launch. It is therefore **NECESSARY** to select the right MAKE → MODEL → ANY OTHER CHARACTERISTICS (Petrol, Diesel, red key system, etc.) to which the specific communication procedure is associated. For more information about the car model see the Functions Menu of the specific make.

6.4.2

6.4.2 CAR MODEL NOT ENABLE

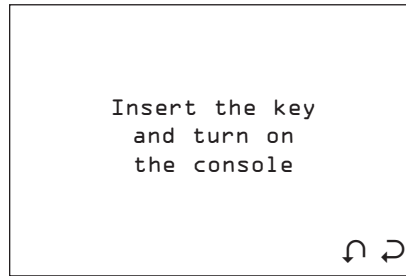
If a car model that is not enabled is selected, a beep is heard and the display shows:

```
- VOLKSWAGEN -  
  
Device not enabled  
for this model.  
Insert password from  
menu ENABLE FLAGS  
(5↓)  
  
↻
```

6.4.3

CAR MODEL ENABLED

If a car model that is enabled has been selected, the display shows:



- Press ESC to quit.
- Press ENTER to continue.

6.4.4

COMMUNICATION PROCEDURE WITH THE IMMOBILIZER

The following message appears:



The communication procedure with the immobilizer starts; if the car model selected is correct and the immobilizer is detected, the Functions menu by make appears, otherwise an error message is shown (see chap. 7 “WARNING/ERROR MESSAGES”, page 22).

6.5

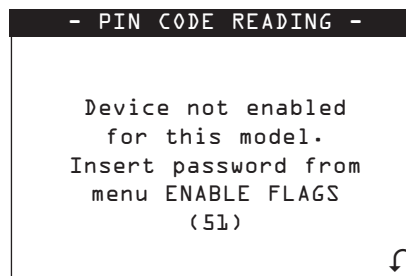
PIN CODE READING

This function can read (only for certain VAG models) the vehicle PIN CODE directly from the OBD-II socket. Select “PIN CODE READING” from the MAIN MENU and press ENTER.

6.5.1

DISABLED VEHICLE MODEL

If the function is not enabled a beep is heard and a message appears:



6.5.2

ENABLED VEHICLE MODEL

If the function is enabled the following message appears:

```
Turn the ignition on!  
  
Press any key ...
```

6.5.3

COMMUNICATION PROCEDURE FOR PIN CODE READING

The display shows:

```
Please wait  
connecting ...
```

The communication procedure starts with the vehicle control panel memory. Different screens may appear, according to the type of control panel on the vehicle.

6.6

7-4 PIN CONV.

This function is used to convert a 7-digit pin code (issued by the dealer) to a 4-digit pin code for use on VOLKSWAGEN(r), AUDI(r), SEAT(r) and SKODA(r) vehicles.

- To activate the function, select "7-4 PIN CONV." and press **ENTER**.

```
- VAG CONVERTER -  
PIN 7  
DEALER  
IMPORTER  
> PIN 4  
DATE (XX/XX/XXXX)  
  
↓↑←→↻↺
```

- To activate the function, select ENTER.
- Press ESC to exit.

6.6.1

PIN 7

This is a 7-digit code issued by the dealer.

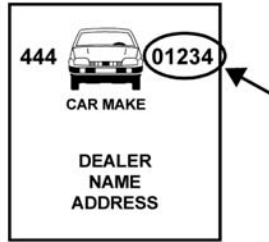
How to apply for the code:

- Use the function "READ IMMO ID" in TKO to read the series number of the central unit.
- Provide the authorized dealer with the following data:
 - Central unit series number
 - Chassis number
 - Copy of log book
 - ID document for applicant

6.6.2

DEALER

This is the ID code for the authorized dealer (different from dealer to dealer) who issues the 7-digit code. The code is included in the rubber stamp used by the dealer to validate work on the vehicle.



The stamp shown above is often found in the vehicle maintenance booklet.

- To activate the function, select "DEALER" and press ENTER.

6.6.3

IMPORTER

This is the ID code for the country in which the 7-digit code is applied for (different from country to country). The code is included in the rubber stamp used by the dealer to validate work on the vehicle.

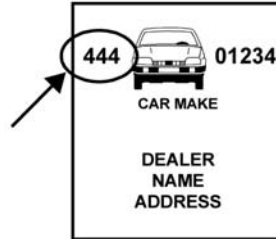


Table of currently known Importer Codes.

COUNTRY	IMPORTER CODE
ITALIA	- 264
ENGLAND	- 210
ISRAEL	- 730
USA	- 444
CANADA	- 999
SPAIN	- 572
PORTUGAL	- 261
RIUNION ISLAND	- 387

- To activate the function, select "IMPORTER" and press ENTER.

6.6.4

PIN 4

This is the 4-digit code to enter as PIN CODE on the TKO during the "PROG.NEW KEYS" or "No. KEYS MEM." stages.

It is calculated by the device when the other codes are known: Code7, Dealer Code, Importer Code and date of issue.

CALCULATION OF PIN 4

calculate the PIN 4 proceed as follows:

- Insert the day, month and year of issue of CODE 7
- To activate the function, select "DATE" and press ENTER.
- Insert the PIN 7, DEALER and importer CODE.
- o activate the function, select the figure to insert and press ENTER.

An asterisk will confirm that the figure has been entered.

```

- VAG CONVERTER -
PIN 7
DEALER
IMPORTER
> PIN 4
DATE (XX/XX/XXXX)
EXIT

↓↑←→↶↷

```

- The PIN 4 will appear automatically once all the data have been entered (DATA, PIN 7, DEALER, IMPORTER).

ADVANCED OPTIONS

The function can also be used for inverse calculation.

Example:

If you have the **correct data** for:

- The **date of issued** of CODE;
- 3 of the 4 codes required;

The missing CODE can be found. Just insert the 3 items of known data and the missing figure will appear automatically.

6.7

SETUP

This section contains the various setting menus for the machine.

Select "SETUP" from the main menu and press ENTER.

```

- SETUP -
> 1 - ENABLE FLAGS
2 - LANGUAGE
3 - SERIAL NUMBER
4 - CALENDAR/CLOCK
5 - RELEASE
6 - STORE PASSWORD
7 - KEYS REFERENCE

↓↑←→↶↷

```

- Select and press **ENTER**.

6.7.1

ENABLING

After selection the display will show:

```

- ENABLING -
> 1 - IMMOBILIZER
2 - REMOTE CONTROLS
3 - TOKEN (X)

↓↑←→↶↷

```

- Select IMMOBILIZER to view the vehicle makes available for entering enabling in the "Immobilizer" function;
- Select REMOTE CONTROLS to view the vehicle makes available for entering enabling in the "Remote Controls" function;
- Select TOKEN to view the tokens available; further tokens can be loaded.
- Select and press **ENTER**.

ENABLING MAKES (FUNCTION AVAILABLE ONLY FOR TKO FULL LOAD DEVICES)

After selecting the menu "IMMOBILIZER or REMOTE CONTROLS" the display will show:

```
- ENABLING -
> AUDI
  FORD
  NISSAN
  OPEL
  SEAT

↓↑←→↶↷
```

Select the required make to view the enabling levels available and those already enabled.

```
- ENABLING MAKE -
LEVEL 1 (*)
LEVEL 2 (*)
> LEVEL 3 (*)

↓↑←→↶↷
```

To enter the enabling password applied for with the document provided with the software update disk (software application FORM).

- Select the level of enabling and press ENTER.
- Select ESC to quit.

NOTE: the levels marked (*) are already enabled for operation

PASSWORD ENTRY

After selecting the enabling level the display will show:

```
- ENABLING MAKES -

Insert Password
for abilitation
LEVEL X

↶↷
```

- Enter the password comprising 6 numerical characters.
- Press ENTER to continue, ESC to quit.

WRONG PASSWORD

If the Password entered is wrong the user is warned by a beep and the display will show:

```
PASSWORD
ABILITATION GROUP
CAR BRAND
WRONG

↶↷
```

- Repeat the operation.

ATTENTION: only 3 attempts are allowed, after which the device is blocked. To release disconnect the device from the power supply, then re-connect.

RIGHT PASSWORD

If the Password entered is right, the display will show:

```
ABILITATION GROUP
CAR BRAND
ENABLED
```

From this moment the device is enabled to operate at the enabling level selected.

6.7.2

LANGUAGE

This function is used to select the language for the device.

- Select the item "**LANGUAGE**" from the "Setup" menu, the display will show:

```
- LANGUAGE -
> 1 - ITALIANO
  2 - DEUTSCH
  3 - FRANCAIS
  4 - ENGLISH
  5 - ESPANOL
  6 - GREEK
  7 - PORTUGUES
      ↑ ↓ ← → ↻ ↺
```

- Select the language and press **ENTER**

6.7.3

SERIAL NUMBER

This function is used to view the serial number of the machine.

- Select the item "**SERIAL NUMBER**" from the "Setup" menu; the display will show:

```
TK0
SERIAL NUMBER
XXXXXXXXXXXXXX
```

6.7.4

CLOCK

This function is used to read the machine's internal clock.

- Select the item "**CLOCK**" the "Setup" menu; the display will show:

```
- CALENDAR/CLOCK -
      TIME:
      XX:XX:XX
      DATE:
      XX/XX/XXXX
      ↑ ↓ ← → ↻ ↺
```

- Press **ESC** to quit.
- Select **ENTER** to continue.
- Follow the instructions given by the device.
- The user is not enabled to the TIME/DATE changing functions of the clock.

6.7.5

VERSION

This function is used to view the FIRMWARE / SW / DATABASE version on the device.

- Select the item "**VERSION**" from the "Setup" menu:

```
- TK0 -  
  
Ver. (SW): XXX.XX.XXX  
Ver. (DB): XX.XX  
Release: XXXXXXXX  
  
↓↑←→↻↺
```

- Ver. (SW): version of the **internal program**
- Ver. (DB): version of the car **makes-models database**
- Update: **database update** level given by the manufacturer's code.

6.7.6

MEMORIZE PASSWORD

This option can be used to bypass the password, which is required every time the machine is turned on.

- Select the item "**MEMORIZE PASSWORD**" from the "Setup" menu, the display will show:

```
- MEMORIZE PASSWORD -  
  
> YES  
  NO  
  
↓↑←→↻↺
```

- Select and press **ENTER**
- Select **ESC** to quit.

6.7.7

KEYS REFERENCES

This option can be used to view the Silca or Ilco keys references on HELP F1 menu.

- Select the item "**KEYS REFERENCES**" from the "Setup" menu; the display will show:

```
- KEYS REFERENCES -  
  
Select the  
reference  
to display  
> SILCA  
  ILCO  
  
↓↑←→↻↺
```

- Select and press **ENTER**.
- Select **ESC** to quit.

6.8

ARCHIVE

This section contains all the controls for searching, printing, or deleting user data stored in the device memory.

Select "**ARCHIVE**" from the MAIN MENU and press **ENTER**; the display will show:

```

- DATA BASE -
1 - SEARCH
2 - PRINT DATA
3 - ARCHIVE RESET

↓↑←→↶↷

```

6.8.1

SEARCH

This control is used to make a search for:

- POS.: Position in which the operation carried out was saved
- DATE: date on which the operation was memorized
- MAKE: car make
- MODEL: car model
- SURNAME: customer's surname
- NUMBER PLATE: car number plate

Select "**SEARCH**" from the "**ARCHIVE**"; menu; the display will show:

```

- SEARCH -
POS.:      XX
DATE:      XXXXXXXX
> BRAND:   XXXXXXXXXXXX
MODEL:     XXXXXXXXXXXX
SURNAME:   XXXXXXXXXXXX
REG. NO.:  XXXXXXXXXXXX

↓↑←→↶↷

```

- Use the , , arrow keys to place the cursor in the required field and press .
- Enter the characters to be searched for.
- Press **ENTER** to proceed the search.

SEARCH METHOD

(POS.) (DATE)

- Digit a number or the date and press ENTER: the display will show the corresponding record.
- Use the key to view the previous record, the key to view the next record.

(MAKE) (MODEL) (SURNAME) (NUMBER PLATE)

- Digit the initial or part of the text to be searched for and press ENTER: the display will show the first record available in order of position (POS.)
- Use the key to view the previous record, the key to view the next record.

If none of the search criteria are met or there are no data in the archive, the display will show:

```

NO INFORMATION
RECOVERED

```

- Press any key and repeat the search.

USER DATA

User data that meet the criteria are shown as follows:

- USER DATA (0) -	
DATE:	20/03/2001
BRAND:	AUDI
MODEL:	A4
YEAR:	(95-98)
SURNAME:	ROSSI
NAME:	MARIO
↓↑←→↶↷	
REG NO.:	TV9988773
KEYS:	3
PIN:	4567
IMMO ID:	(F1)

Use the ←→ keys to view the user data in sequence (depending on the search selected).

- Press key F1 to view the IMMO ID.

6.8.2 PRINTOUT

At present this function is not active.

6.8.3 ARCHIVE ERASE

This function is used to erase all user data in the archive.

- Select "ERASE ARCHIVE" from the "ARCHIVE" menu; the display will show:

- ARCHIVE ERASE -	
> NO YES	
↓↑↶↷	

- Select and press **ENTER**.
- Select **ESC** to quit.

6.9 TEST

This section contains all the controls with which to carry out a rapid operational test on the machine. Select "TEST" from the main menu. The display will show:

- TEST -	
1 -	KEYBOARD
> 2 -	TEXT
3 -	GRAPHICAL
4 -	UPDATE SWITCH CAN
↓↑←→↶↷	

6.9.1 KEYBOARD

This function is used to test the operation of all the keys on the device keypad.

- Select "KEYPAD" from the "TEST" menu.
- To carry out the test press all the keys on the device, one after the other; to quit press any key three times.

TEST RESULT:

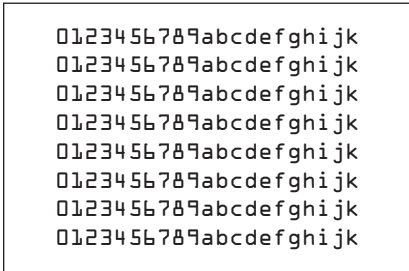
- TEST PASSED (all the keys are working properly)
- TEST FAILED (not all the keys has been pressed) possible causes:
- One or more keys not working properly
- The same key has been pressed for three times in a row.

6.9.2

TEXT

This function is used to test the operation of the display in the Text mode.

- Select “**TEXT**” from the “TEST” menu.



- Check that the characters on the display correspond.
- Press a key to quit.

6.9.3

GRAPHICS

This function is used to test operation of the display in the GRAPHICS mode.

- Select “**GRAPHICS**” from the “TEST” menu and check that all the pixel on the display are illuminated.
- Press a key to quit.

6.9.4

UPDATE SWITCH CAN

This function is used for manual updating of the internal software for the CAN BUS SWITCH.

- Select “**UPDATE CAN BUS SWITCH**” from the “TEST” menu.
- The display will show:

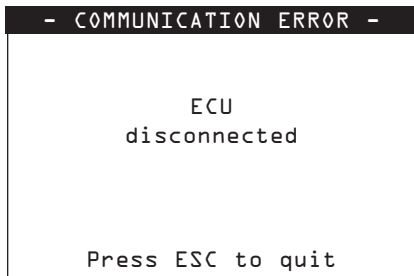


Updating of the **SWITCH CAN BUS** start now.
When updating is complete the TKO re-starts automatically.

7

WARNING/ERROR MESSAGES

ERROR MESSAGE 1



ERROR MESSAGE No. 2

Communication error

Press any key ...

- These error messages may appear during communication with the immobilizer if the connection is cut off, or in the case of physical disconnection between the device and immobilizer: disconnect the device from the socket and repeat the operation.

ERROR MESSAGE 3

Not recognized
protocol

Press any key ...

- This message appears when a car model is selected but none of the queries from the different protocols used receive a coherent reply from the immobilizer. Check that you have selected the right make model.

ERROR MESSAGE 4

Not valid
pin

Press any key ...

- This message appears when the PIN CODE entered is not properly composed or is not recognized by the immobilizer.

ERROR MESSAGE 5

Key not programmed
Repeat procedure

Press any key ...

- This message appears when key programming is not successful. Repeat the procedure.

ERROR MESSAGE 6

```
REMOTE CONTROL
not programmed
Repeat procedure

Press any key ...
```

- This message appears when remote control programming is not successful. Repeat the procedure.

ERROR MESSAGE 7

```
- PROG. NEW KEYS -

KEY i
Acquisition failed
Key faulty
Repeat Procedure

Press any key ...
```

- The key to be programmed is faulty, replace with a new key and repeat programming.
- Press any key to continue

```
- PROG. NEW KEYS -

Procedure interrupted
Keys memorized before
procedure started are
enabled

Press any key ...
```

- All the keys memorized before programming started are still enabled for operation.
- Press any key to continue.

ERROR MESSAGE 8

```
- PROG. NEW KEYS -

KEY i
Acquisition failed
Key faulty
Repeat Procedure

Press any key ...
```

- The key to be programmed is a wrong key, replace with the right key and repeat programming.
- Press any key to continue


```
- PROG. NEW KEYS -  
  
Procedure interrupted  
Keys memorized before  
procedure started are  
enabled  
  
Press any key ...
```

- All the keys memorized before programming started are still enabled for operation.
- Press any key to continue.

ERROR MESSAGE 9

```
- PROG. NEW KEYS -  
  
KEY i  
Acquisition failed  
Key faulty  
Repeat Procedure  
  
Press any key ...
```

- The key to be programmed has been erased and cannot be re-programmed. Replace with a new key and repeat programming.
- Press any key to continue

```
- PROG. NEW KEYS -  
  
Procedure interrupted  
Keys memorized before  
procedure started are  
enabled  
  
Press any key ...
```

- All keys memorized before programming started are still enabled for operation.
- Press any key to continue

ERROR MESSAGE 10

```
- PROG. NEW KEYS -  
  
KEY i  
Acquisition failed  
Key faulty  
Repeat Procedure  
  
Press any key ...
```

- The key to be programmed has already been programmed; repeat programming.
- Press any key to continue.

```
- PROG. NEW KEYS -  
  
Procedure interrupted  
Keys memorized before  
procedure started are  
enabled  
  
Press any key ...
```

- All keys memorized before programming started are still enabled for operation.
- Press any key to continue

ERROR MESSAGE 11

```
- PROG. NEW KEYS -  
  
KEY i  
Acquisition failed  
Key faulty  
Repeat Procedure  
  
Press any key ...
```

- The key to be programmed is without a transponder. Replace with a new key with transponder and repeat programming.
- Press any key to continue.

```
- PROG. NEW KEYS -  
  
Procedure interrupted  
Keys memorized before  
procedure started are  
enabled  
  
Press any key ...
```

- All keys memorized before programming started are still enabled for operation.
- Press any key to continue

ERROR MESSAGE 12

```
- PROG. NEW KEYS -  
  
Key memorization failed  
  
EEPROM memory error  
  
Press any key ...
```

- There is an internal anomaly in the immobilizer.
- Press any key to continue.

ERROR MESSAGE 13

```
- PROG. NEW KEYS -  
  
Body Computer  
not properly  
programmed  
  
Press any key ...
```

- There is an internal anomaly in the body computer.
- Press any key to continue

ERROR MESSAGE 14

```
- RKE PROGRAM -  
  
Procedure failed  
  
Press any key ...
```

- The remote control to be programmed is not the right one, or is broken, or errors have occurred during programming. Make sure the remote control is the right one and efficient, then repeat programming.
- Press any key to continue

ERROR MESSAGE 15

```
- PROG. NEW KEYS -  
  
Error Found:  
XXXX  
Eliminate the error  
before programming keys  
and/or remote controls  
  
Press any key ...
```

- If errors are found in the immobilizer, programming cannot take place.
- Delete the errors using the "DELETE ERRORS" function, then repeat programming.
- Press any key to continue

ERROR MESSAGE 16

```
- PROG. NEW KEYS -  
  
Body Computer  
not properly  
programmed  
  
Press any key ...
```

- The Body computer (main control unit) is not properly programmed; programming operations cannot be carried out.
- Have the body computer properly programmed by an authorized dealer, then proceed with programming.
- Press any key to continue.

ERROR MESSAGE 17

```
- RKE PROGRAM -  
  
REMOTE CONTROL NO. XX  
Learning failed  
Detective rem.control  
Repeat the procedure  
  
Press any key ...
```

The remote control to be programmed is not the right one or is faulty.

- Repeat programming, making sure that the remote control is the right one and operational.
- Press any key to continue.

ERROR MESSAGE 18

```
- RKE PROGRAM -  
  
REMOTE CONTROL NO. XX  
Learning failed  
Run-down battery  
Repeat the procedure  
  
Press any key ...
```

The battery in the remote control to be programmed is flat.

- Replace the remote control battery with a new one and repeat programming.
- Press any key to continue.

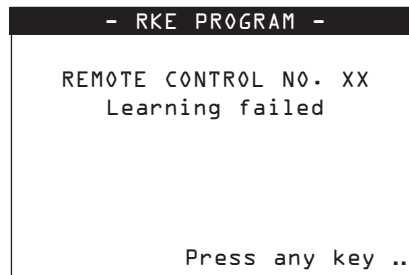
ERROR MESSAGE 19

```
- RKE PROGRAM -  
  
REMOTE CONTROL NO. XX  
Learning failed  
Rem. ctrl alr. acquired  
Repeat the procedure  
  
Press any key ...
```

The remote control to be programmed is already in the memory and operational.

- Use a remote control not yet programmed and repeat programming.
- Press any key to continue.

ERROR MESSAGE 20



Some errors have occurred during programming. Repeat programming, making sure that the remote control to be programmed is the right one and operational, and that the immobilizer system has no operational anomalies (use the reading errors function).

Press any key to continue.

8 HELP MENU

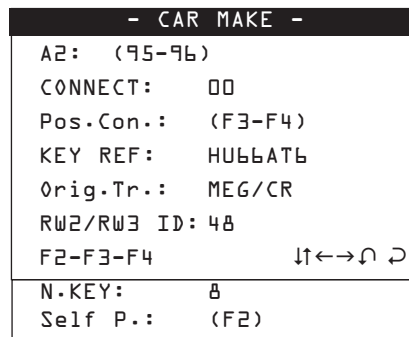
This function is enabled after the selection of car make and model.
The following help functions are available:

F1

Press the function key "F1" to read information relating to the MAKE/MODEL selected:

- MAKE
- MODEL
- YEAR
- REFERENCE (SILCA)
- ORIGINAL TRANSPONDER
- MEMORIZATION PROCEDURE
- MAX. NUMBER OF KEYS THAT CAN BE MEMORIZED
- CONNECTOR TO USE
- ADAPTER TO USE
- CONNECTOR POSITION

Example:



- Connect: type of cable to use to connect with the immobilizer (see ID label on the cable);
- Pos.Con: position on the vehicle of the diagnostics socket to which the device can be connected; press F3 - F4 to access the information.
- Key Ref.: Silca key to use for the car model selected
- Orig.Tr.: type of transponder used on the original key
- RW2/RW3 ID: ID code for transponder used by RW2/RW3.
- No. Key: max. number of keys that can be memorized on the vehicle (when the maximum number of keys is reached, a key must be erased from the memory in order to memorize a new one).
- Self P.: description of the direct programming procedure.

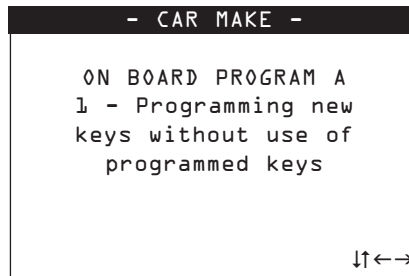
NOTE: correspondence of the original transponder to the Silca key to be used should be checked with the RW2/RW3 for the type of transponder.

The F2-F3-F4 help menus are now available (see last bottom line).

F2

Direct programming is a memorization/deletion method for new keys on the vehicle which does not require diagnostics. The procedure is active on certain models only, as its use depends on the policy of the car manufacturer.

Press the “**F2**” function key; the display will show the direct programming procedure:



F3-F4

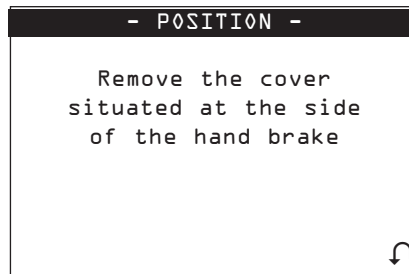
Press the “**F3**” function key, the display will show the position of the connector (Graphic Image)



Fig. 6

- Select **ESC** to quit.

Press the “**F4**” function key, the display will show a description of the position of the connector:



- Select **ESC** to quit.

9

MAINTENANCE

ATTENTION: for repairs or replacement of parts for maintenance, the 'CE' mark is guaranteed only if original spare parts provided by the manufacturer are used.

The machine does not require special maintenance.

ATTENTION: do not open the machine for any reason whatsoever)

Before starting any type of maintenance (checks or replacement of parts) read the following instructions:

- Do not carry out any maintenance operations with the machine turned on;
- Always disconnect from the mains;
- Follow the instructions in the manual;
- Use original spare parts.

FAULT	PROBABLE CAUSE
DISPLAY: - DISPLAY IS BLANK WITH MACHINE ON	A) CHECK POWER SUPPLY CONFIGURATION B) CHECK CONNECTION WIRING - REPLACE DISPLAY (AFTER-SALES SERVICE) - REPLACE ELECTRONIC CONTROL BOARD (AFTER-SALES SERVICE)
KEYPAD: -NOT RESPONDING TO CONTROLS	A) CHECK CONNECTION WIRING - REPLACE KEYPAD (AFTER-SALES SERVICE)
NO COMMUNICATION WITH THE CENTRALIZED UNIT	A) CHECK THAT THE RIGHT CAR MODEL HAS BEEN SELECTED B) CHECK THE WIRING

The instructions above relating to the probable causes of the faults described should be considered indicative and not a complete list of the possible causes of malfunctions. Contact the After-Sales Service in the event of any other problems arising.

9.1

CHECKING WIRING

If it is necessary to check the machine's internal wiring, proceed as follows:

- Disconnect the supply wire;
- Detach any other wires connected to the machine;
- Remove the 4 screws located on the back of the machine;
- Remove the cover carefully, paying attention to the wiring;
- Check that all the connectors are properly in place.

10

WASTE DISPOSAL

EU regulations establish special arrangements for the disposal of waste (*).

WASTE DERIVING FROM THE MACHINE

The machine produces no waste during its use.

MACHINE

The machine is made of re-usable materials. Re-cycling is recommended ecological practice.

PACKING

The machine is consigned in a cardboard packing box which can be re-used if undamaged. When it is to be thrown away it is classified as solid urban waste and it should be placed in the special paper collecting bins.

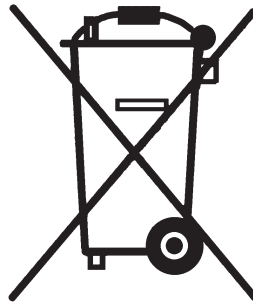
(*) Waste is any substance or object deriving from human activity or natural cycles, thrown away or to be thrown away.

DISPOSING OF THE BATTERY

The battery (fig. 7) must be disposed of according to current regulations.



Fig. 7



INFORMATION FOR USERS

as per art. 10 of Directive 2002/96/CE of 27/01/2003 regarding waste from electric and electronic appliances (RAEE),

- The symbol illustrated above, also found on the machine, indicates that it has been placed on the market and must be included in separate rubbish collection when the user wishes to dispose of it (including all components, sub-assemblies and consumables that are integrated in the product).
- For information about the collection system for such appliances please contact SILCA S.p.A. or another subject registered in the various National Rolls for other countries in the European Union. Household waste (or of similar origin) can be included in the separate collection system for urban waste.
- On purchasing a new appliance of equivalent type, the old one can be consigned to the dealer. The dealer will then contact whoever is responsible for collecting the appliance.
- Suitable separate collection of the unused appliance and its dispatch for treatment, recovery and environmentally compatible disposal, makes it possible to avoid potential negative effects on the environment and human health, and aids recycling and the recovery of the materials used.
- Unauthorized disposal of the product by users involves the application of the sanctions provided for in received Directives 91/156/CE and 91/689/CE.

11

ASSISTANCE

Silca provides full assistance to purchasers of the machine. To ensure complete safety for the operator, any job not specified in this manual should be carried out by the manufacturer or in the special Service Centers recommended by Silca. On the back cover of this manual there is a list of the Service Centers and relative addresses.

11.1

HOW TO REQUEST SERVICE

The guarantee attached to the machine ensures free repairs or replacements of faulty parts within 12 months of purchase. All other service calls must be arranged by the customer with Ilco or with a Ilco service center. (See inside front cover of this manual for contact information.)