

LOCKNETICS BY SCHLAGE

Schlage Computer Managed CM Locks are stand-alone, battery-powered locks that can be programmed with LockLink™ or LockLink™ Express access control management software. The same software can also manage the Von Duprin CM993 exit trim for 98/99 Series exit devices and the Locknetics Universal Controllers, which provide intelligent access control for electrified or battery-powered products such as magnets, strikes and cabinet locks. Multiple access points. Multiple users. Multiple credentials. One way to manage them.

Provides Unmatched Access Control

- Can manage up to 1,000 users and provide audit trail for the last 1,000 events
- SmarTime allow for time functionality:
 - 16 time zones
 - 16 time schedules
 - 32 holidays
 - first person in
 - credential expiration
 - credential activation
- Electronics on secure side of door
- Full-swipe mag stripe card reader for maximum readability and reliability
- Optional audit trail of mechanical key override
- Optional auto card updating feature which disables a lost or stolen card when the reissued card is presented at the lock
- Future product upgrades can be easily made with programmable firmware without having to swap out components

Access Control Management Software & Accessories

LockLink™ Express – Designed for small to medium offline access control systems. Recommended PC operating systems are Microsoft Windows ME, 2000 SP 4 and XP SP1. Manages all Locknetics On Board products in addition to the HandKey II from Recognition Systems.

LockLink™ – Designed for medium to large offline access systems. Recommended PC operating systems are Microsoft Windows 2000 SP 4, XP SP1 and Windows Server 2003. Manages Locknetics On Board products in addition to the HandKey II from Recognition Systems. Requires factory authorized training.

LockLink™ Express Software Packages

Part No.	Description
LNC EXCIP*	Computer Interface Pack - LockLink Express Includes Windows based LockLink Express software, PC cable and Interface module
LNC EXCIP+*	Computer Interface Pack Plus - LockLink Express Includes Windows based LockLink Express software, PC cable, interface module, programming device, and cable.

Software Accessories

Part No.	Description
LNC CRK8000*	Mag Card Reader and Keyboard - Used to read Mag Card into the LockLink and LockLink Express database. Specify Track 2 (standard) or Track 3 when ordering
LNC CRM*	Credential Reader Magstripe - Used to read Mag Cards into the LockLink Express or LockLink database. Track 2 only
LNC CRP*	Credential Reader Proximity - Used to read HID-based proximity credentials into the LockLink or LockLink Express database
LNC P101203*	CIP Interface Module
LNC P394548*	CIP Interface Cable

Access Credentials

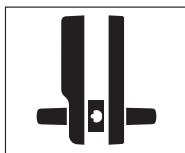
Part No.	Description
LNC IBF-----	iButton FOB Black
LNC IBA*-----	iButton (Adhesive Back)
LNC IBF-X*-----	iButton on Fob (X = specify color: blue, gray, green, red, yellow)
LNC MAG1*-----	Mag Card - Not Encoded, no logo
LNC MAG2*-----	Mag Card - Encoded (track 2 and track 3) with IR Security & Safety logo
LNC MAG3*-----	Mag Card - Encoded, no logo
LNC PRX1*-----	Prox Card - Standard .070" thick
LNC PRX2*-----	Prox Card - Adhesive back for photo application .070" thick
LNC PRX3*-----	Prox Card - ISO - Credit card size & thickness .031" thick
LNC PRX4*-----	Prox Card - Dual technologies - Magstripe & Prox .031" thick
LNC PRX5*-----	MicroProx with adhesive back .070" thick
LNC PF1*-----	Prox Keyfob
LNC P510310-10*	MagCard Reader Cleaning Cards - 10 pack
LNC P510310-5*	MagCard Reader Cleaning Cards - 5 pack

*F/O

ELECTRONIC LOCKS • Functions

ANSI Grade 1

CM5100-Series Cylindrical Computer Managed Locks



Classroom/Storeroom

Part No.: CM5196

The outside lever is normally locked. The inside lever is always free. The unit may be maintained unlocked by using a Toggle Mode access code. Available in cylindrical/mortise latchbolt/mortise autobolt designs.

CM5500-Series Mortise Computer Managed Locks



Office (Latchbolt)

Part No.: CM5590

The outside lock is maintained locked or unlocked by pushbuttons on the inside electronic housing. The inside lever is always free.



Classroom/Storeroom (Latchbolt)

Part No.: CM5596

The outside lever is normally locked. The inside lever is always free. The unit may be maintained unlocked by using a Toggle Mode access control credential.

PRO5100, PRO5500 & PRO5700-Series Programmable Locks



Classroom/Storeroom

Part No.: CYLINDRICAL PRO5196

The lockset is normally secure. The lockset can be changed to passage or secured status with valid Toggle Access Codes. The inside lever always allows free egress.



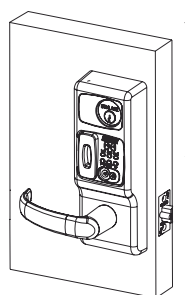
Classroom/Storeroom

Part No.: MORTISE PRO5596

The lockset is normally secure. The lockset can be changed to passage or secured status with valid Toggle Access Codes. The inside lever always allows free egress.

COMPUTER MANAGED (CM) LOCKING SYSTEMS

CM5100 Cylindrical Series



CM5100-PXK

Model:

Part No.	Description
LNC CM5196	Classroom/Storeroom

Available Lever Styles:



Style 06



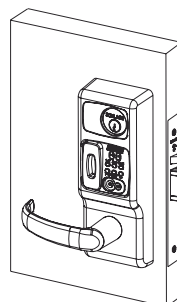
Style 17

Stocked less cylinder in 626 finish

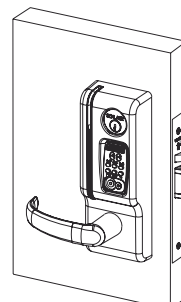
Available Lock Options:

Part No.	Description
ATK	Audit trail of emergency mechanical key override
SLB	2 3/4" backset, 1/2" latchbolt (standard)
Door Thickness:	1 3/4" (Standard)

CM5500 Mortise Series

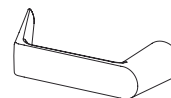


CM5500-PXK



CM5500-MGK

Available Lever Styles:



Style 06



Style 17

Model:

Part No.	Description
LNC CM5590	Office (3/4" latchbolt)
LNC CM5596	Classroom/Storeroom (3/4" latchbolt)

Available Credentials:

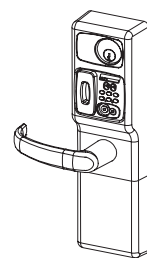
	Description
MGK	Mag Card Reader - iButton - keypad
PXK	Prox Reader - iButton - keypad

Stocked less cylinder in 626 finish

Available Lock Options:

	Description
ATK	Audit trail of emergency mechanical key override
Door Thickness:	1 3/4" Standard

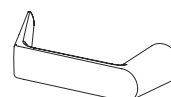
CM993PXK Series Exit Trim



Retrofit with existing Von Duprin 98 and 99 Series Exit Trim. (see list) Surface/concealed vertical rod and three-point latching models.

- System can utilize existing credentials
- Battery powered, requires 4 standard "AA" alkaline batteries
- Vandlegard® lever design prevents damage to lever from force or extreme abuse

Available Lever Style:



Style 06

Stocked in 626 finish

Retrofits:

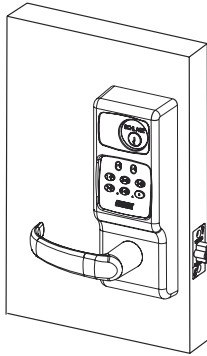
Part No.	Description
98(F)/99(F)	RIM
9827(F)/9927(F)	Surface Vertical Rod
9847(F)/9947(F)	Concealed Vertical Rod
9848(F)/9948(F)	Concealed Vertical Rod
9857(F)/9957(F)	Three-Point Latching

(F=Fire Rated)

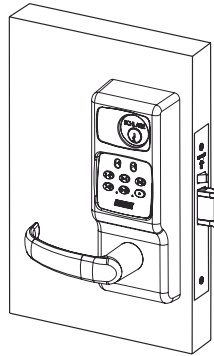
Part No.: LNC CM993PXK

PROGRAMMABLE ACCESS CONTROL SYSTEMS

PRO5100 Cylindrical Series Locks
PRO5500 Mortise Series Lock



PRO5196



PRO5596

Standard Features:

- 120 code capacity, programmable at the keypad
- Add and delete users in seconds
- ANSI/BHMA Grade 1
- Architectural finishes and levers
- Battery-powered

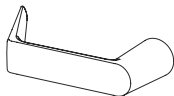
Models:

Part No.	Function
LNC PRO5196 -----	Cylindrical Classroom/storeroom
LNC PRO5596 -----	Mortise Classroom/storeroom 3/4" latchbolt

Credential:

PRO - Programmable Keypad

Lever Styles:



Style 06



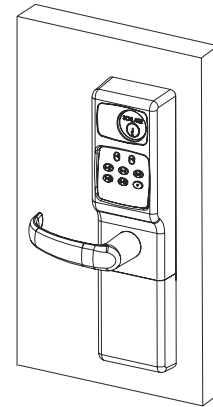
Style 17

Stocked less cylinder in 626 finish

Lock Options:

Part No.	Description
LNC EG -----	Exterior Gasket
LNC SLB -----	23/4" backset, 1/2" latchbolt (standard) (for PRO5100 cylindrical series only)
Door Thickness: -----	13/4" (standard)

PRO993 Series Exit Trim



Retrofit with existing Von Duprin 98/99 exit devices (see list)

Standard Features:

- 120 user codes programmable at the keypad
- Add and delete users in seconds
- ANSI/BHMA Grade 1
- Architectural finishes and levers
- Exterior Gasket

Retrofits:

Part No.	Description
98(F)/99(F) -----	RIM
9827(F)/9927(F) -----	Surface Vertical Rod
9847(F)/9947(F) -----	Concealed Vertical Rod
9848(F)/9948(F) -----	Concealed Vertical Rod
9857(F)/9957(F) -----	Three-Point Latching
(F=Fire Rated)	

Model:

Part No.	Description
LNC PRO993 -----	Exit Trim with Programmable Keypad

Power and Mode

BP – Battery-Powered

Lever Styles:



Style 17

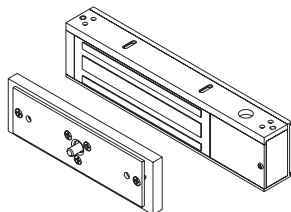
Stocked less cylinder in 626 finish

Door Thickness: -----13/4"
(specify door handing)

ELECTROMAGNETIC LOCKS & ACCESSORIES

390+ MagForce™ High Security Series

Standard with Automatic Voltage Selection



390+ Single Lock

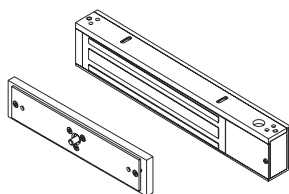
Select Model:

Part No.	Description
Single Lock Maglock	
LNC 390+ -----	Maglock - automatic voltage selection

Specifications	
Holding Force (lbs.)	1650
Input Voltage (std. unit)	12/24VDC
Current Draw (amps-std. unit)	.60A @ 12VDC
Auto dual voltage 12/24 VDC	.30A @ 24VDC
Height	2 ³ / ₄ "
Length	10 ¹ / ₂ "
Width	1 ¹¹ / ₁₆ "
Weight (approx lbs.)	10.60 lbs.

350+ MagForce™ Narrowline Series

Standard with Automatic Voltage Selection



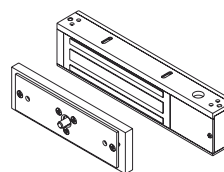
350+ Single Lock

Part No.	Description
LNC 350+ -----	Maglock - automatic voltage selection

Specifications	
Holding Force (lbs.)	1200
Input Voltage (std. unit)	12/24VDC
Current Draw (amps-std. unit)	.75A @ 12VDC
Auto dual voltage 12/24 VDC	.38A @ 24VDC
Height	2 ¹ / ₈ "
Length	12 ¹ / ₂ "
Width	1 ¹¹ / ₁₆ "
Weight (approx lbs.)	9.60 lbs.

320+ MagForce™ Traffic Control Series

Standard with Automatic Voltage Selection



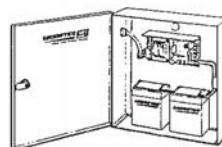
320+ Single Lock

Part No.	Description
LNC 320+ -----	Maglock - automatic voltage selection

Specifications	
Holding Force (lbs.)	700
Input Voltage (std. unit)	12/24VDC
Current Draw (amps-std. unit)	.75A @ 12VDC
Auto dual voltage 12/24 VDC	.38A @ 24VDC
Height	2 ¹ / ₈ "
Length	8 ⁹ / ₁₆ "
Width	1 ¹¹ / ₁₆ "
Weight (approx lbs.)	5.60 lbs.

505 Power Supply

12/24 VDC



505 shown with SBP2 - KLC

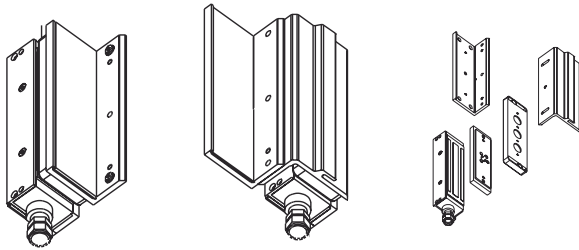
Standard Features:

- Low voltage DC, regulated, filtered
- Step down transformer, fused primary output and 6 heavy-duty screw terminals
- 12 VDC - 1 Amp, 24 VDC - a 1 Amp, field selectable
- Battery charging circuit
- NEMA 1 enclosure - 12" H x 12"W x 4"D hinged cover with lock down screws

Part No.
LNC 505

ELECTROMAGNETIC LOCKS & ACCESSORIES

390G+ Gate Lock

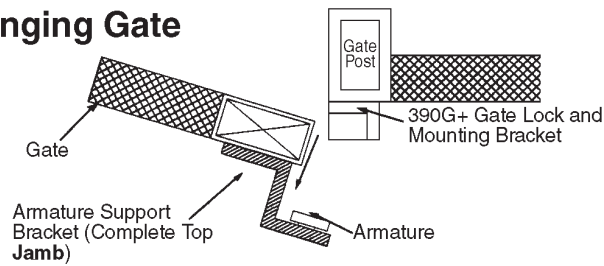


390G+ Single Lock

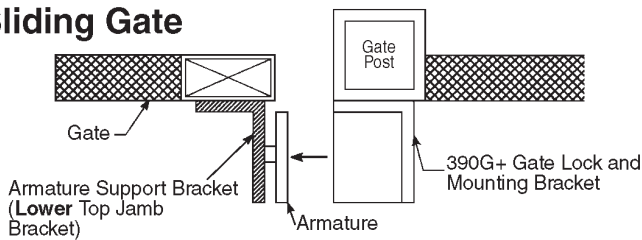
Standard Features:

- Includes universal mounting brackets for swinging or sliding gate
- Special Corrosion resistant finish
- 1/2" EMT compression fitting
- Built in voltage spike suppression
- No Circuit board

Swinging Gate



Sliding Gate



Part No.

LNC 390G+

Specifications	
Holding Force (lbs.)	1500
Input Voltage (std. unit)	12/24VDC
Current Draw (amps-std. unit)	.67A @ 12VDC
Dual voltage field selectable	.35A @ 24VDC
Height	2 1/2"
Length	9"
Width	1 1/2"
Weight (approx lbs.)	13.5 lbs.