

# Interchangeable Core Products

Interchangeable with: **BEST • ARROW • FALCON**



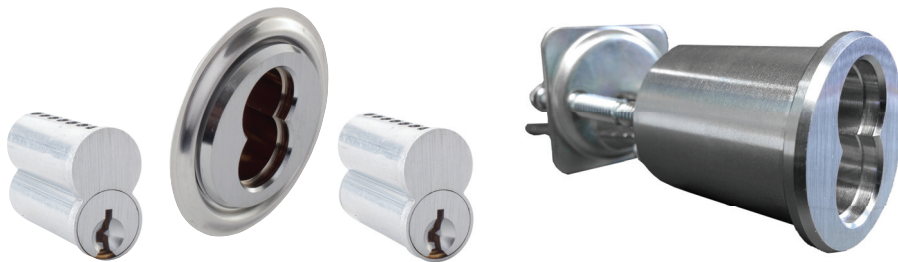
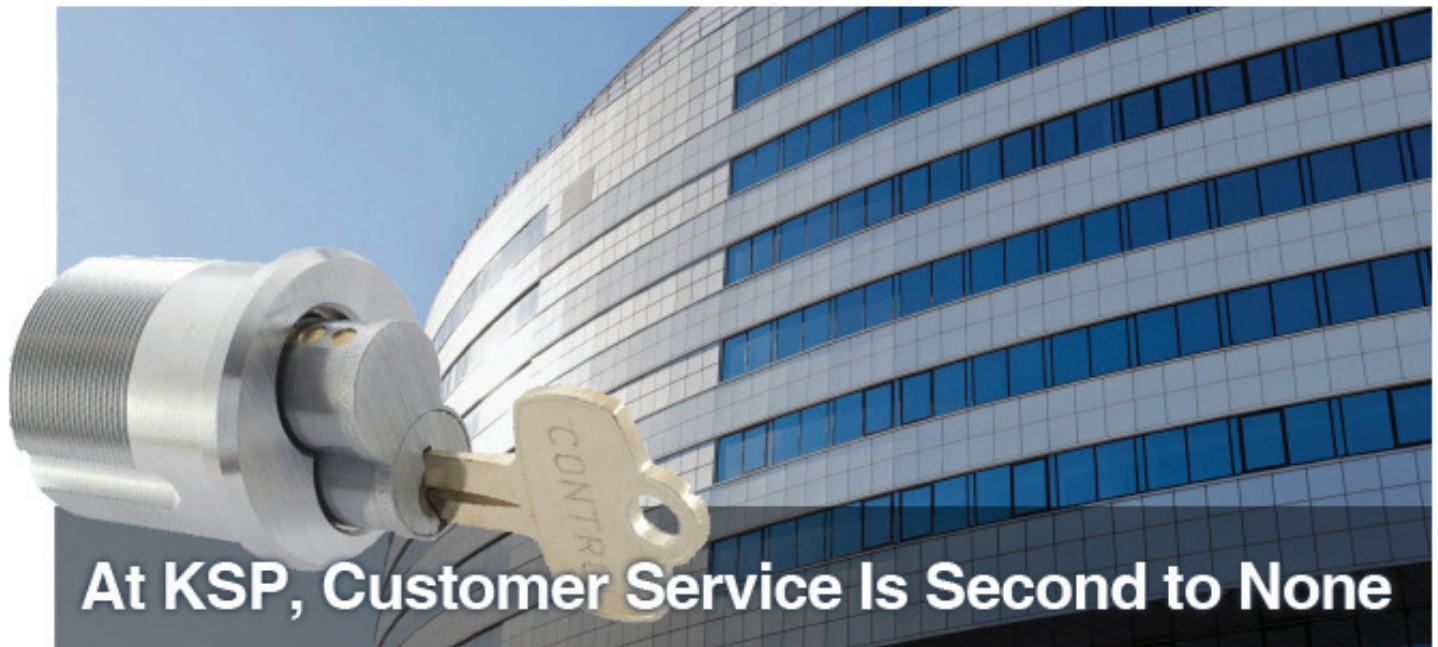
## Killeen Security Products

Killeen Machine Tool Co., Inc.  
33 Hermon Street  
Worcester, MA 01610

# KSP

**1-800-577-5397**  
**www.iccore.com**

e-mail: sales@iccore.com  
phone: 508-798-3200  
fax: 508-753-2183





# Interchangeable Core Products

Interchangeable with: **BEST • ARROW • FALCON**

## Terms

Net 30 Days

**Ship Pre-Paid**

On Orders \$1,500.00 or More

**10% Restocking Charge on returns**

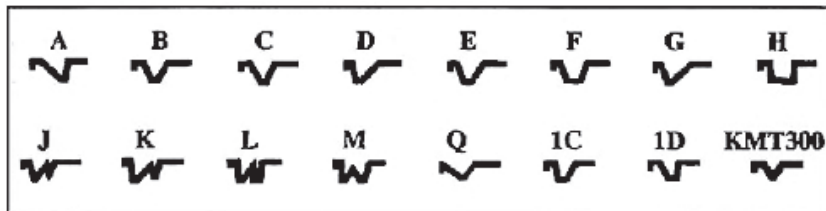
**\$50.00 Minimum Order**

## Cores – Uncombined

Part Number	Description	Keyway	Finish
206	6 Pin	X	4 / 26D
207	7 Pin	X	4 / 26D

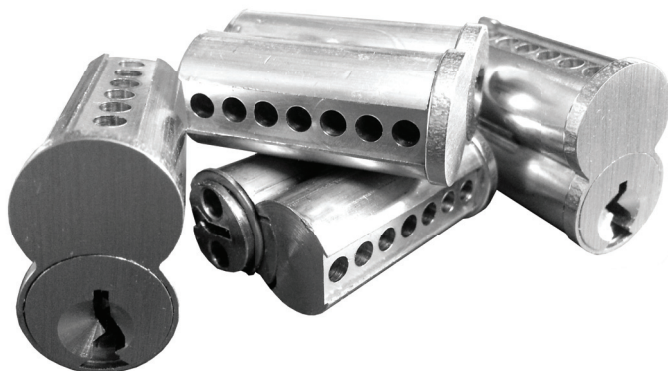
**\*Order Example**

206 -A - 26D Uncombined



**US4 and US26D finish only**

Above cores also available in Slide Cap (FALCON Style) cores



**\*Order Example**

206SC -A - 26D



**Made in the USA**

## Interchangeable Core Products



Interchangeable with: **BEST • ARROW • FALCON**

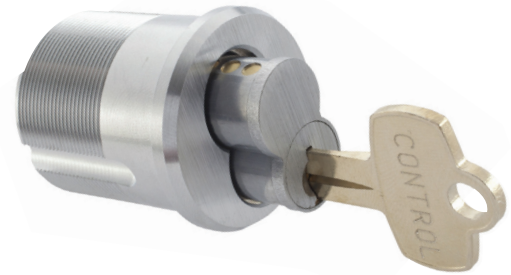
### Cores – Combined

Part Number	Description	Keyway	Finish
206C	6 Pin	X	4 / 26D
207C	7 Pin	X	4 / 26D

**\*Order Example**

206C-A-26D Combined

A	B	C	D	E	F	G	H
J	K	L	M	Q	1C	1D	KMT300



### Cores – Sliding Glass/Showcase Lock

Part Number	Description	Keyway	Finish
206SPL	6 Pin	X	4/26D
207SPL	7 pin	X	4/26D

Available in all keyways. Core only.

**\*Order Example**

206SPL-A-26D





# Interchangeable Core Products

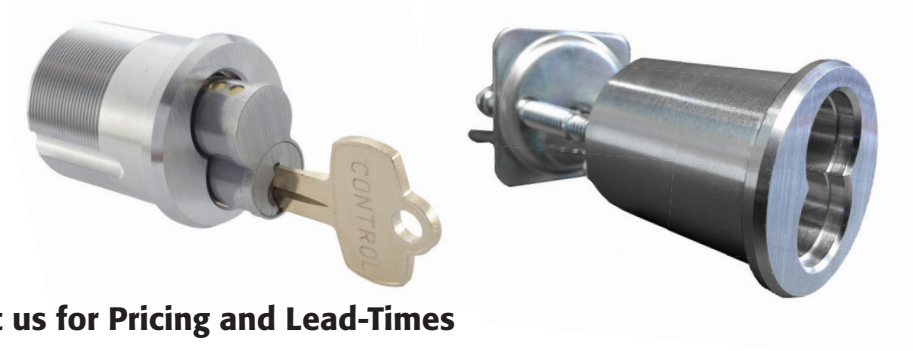
Interchangeable with: **BEST • ARROW • FALCON**

## Mortise and Rim Housings Staked-On (Fixed) Cam

Part Number		Description
306	1-1/4"	6 Pin Mortise Housing
307	1-3/8"	6/7 Pin Mortise Housing
307 Long	1-3/4"	6/7 Pin Mortise Housing
307 XLong	1-7/8"	6/7 Pin Mortise Housing
308		6/7 Pin Rim Housing
308-6		6 Pin Rim Housing
316		6 Pin Tapered Head Housing
317		6/7 Pin Tapered Head Housing
308LFIC		FSIC Schlage Style Rim Housing

## Finish

03	Bright Brass
04	Satin Brass
10	Satin Bronze
10B	Duro
26	Bright Chrome
26D	Satin Chrome



Special Finishes Available. Contact us for Pricing and Lead-Times

### \*Order Example

Part #	Cam	Finish
307	600	26D



306



307



307 Long



308LFIC



308



316



317

# Interchangeable Core Products



Interchangeable with: **BEST • ARROW • FALCON**

## Housing Cams (Bag of 20)

Part Number	Description
600	Standard Cam
601	Adams Rite Cam
602	Clover Cam
602-S	Sargent Cam
602-L	Schlage Cam



600



601



602



602L

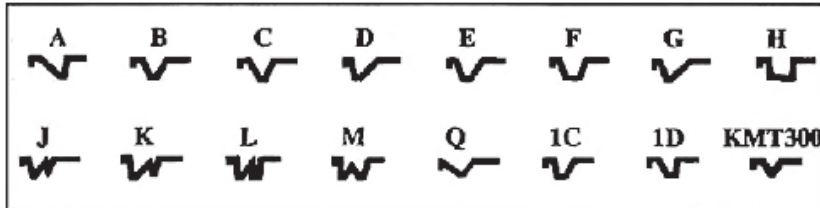


602S

## Key Blanks

Part Number  
400K

\*Order Example  
400K - A



## I/C Housing Drive Pins & Washers

Part Number	Description	Quantity
603	Studs	100 /pack
604	Small Spacer	100 /pack
605	Large Spacer	100 /pack



### **Mortise and Rim Housings** Screw-On (Removable) Cam **All Housings Less Cam**

**Screw on Cams / Standard Finishes**

Part Number		Description
406	1-1/4"	6 Pin Mortise
407	1-3/8"	6/7 Pin Mortise
407 Long	1-3/4"	6/7 Pin Mortise
407 XLong	1-7/8"	6/7 Pin Mortise
416		6 Pin Tapered Head
417		6/7 Pin Tapered Head
407LFIC		FSIC Schlage Style Mortise
308LFIC		FSIC Schlage Style Rim Housing

**Each housing includes Cam Retainer & 2 screws**



407 LFIC



Part Number	Description
K700	Standard Cam
K701	Adams Rite Cam
K702	Clover Cam
K702-S	Sargent Cam
K702-L	Schlage Cam

**Each Cam sold in bags of 10**

# Interchangeable Core Products

Interchangeable with: **BEST • ARROW • FALCON**



## I/C Core Pin Kits A2, A3, A4

### Part Number

A2-Kit

A3-Kit

A4-Kit

## I/C Core Pin, Caps, Springs

### Part Description

.108 Diameter

### Quantity

1000 / Pack Only



Part Number: **K7CAMKIT**

Description: Cam Kit with various cams and accessories

Includes the following:

- Qty. 10 – K700 (Standard) screw-on cams
- Qty. 10 – K701 (Adams Rite) screw-on cams
- Qty. 10 – K702 (Clover) screw-on cams
- Qty. 10 – K702S (Sargent) screw-on cams
- Qty. 10 – K702L (Schlage) screw-on cams

- 100pcs – Cam Screws (pre-applied Loctite)
- Variety of solid spaces
- Variety of step spacers
- Turn Knob



Call 1-800-577-5397 • [www.iccore.com](http://www.iccore.com)

### Rings & Collars

Part Number	Description	Size
500	Rim	-
501	Step Mortise	1/8" - 1/4"
502	Solid Collar	1/8" - 1/4" - 3/8"



### Finish

03	Bright Brass
10	Satin Bronze
10B	Duro
26D	Satin Chrome



### I/C Brass Padlocks

Part Number	Shackle Diameter	Shackle Length
801	5/16'	1-1/8"
802	5/16'	2"
803	5/16'	3"
804	5/16'	4"



**Solid Brass Body - 1-3/4" Wide - 2-1/8" Long - 3/4" Thick**  
**Case hardened chrome plated steel shackle**



## Interchangeable Core Products

# KSP

Interchangeable with: **BEST • ARROW • FALCON**

### *I/C Tools*

**Part Number**

606

608

609

**Description**

Capping Block & Punch

Staking Tool

Housing Wrench



606



608

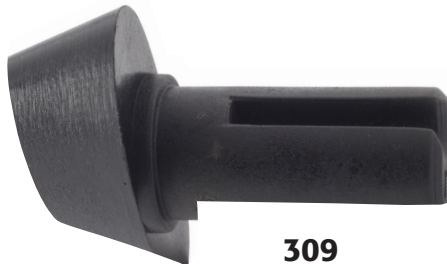


609

### *Plastic Core Turn Knob*

**Part Number**

309



309



## Interchangeable Core Products

Interchangeable with: **BEST • ARROW • FALCON**

### I/C Tools

#### Part Number

610

611

614

#### Description

Ejector Punch

Decoding Gauge

Capping Strips

(For New Style A1 Security Capping Press)



610



611

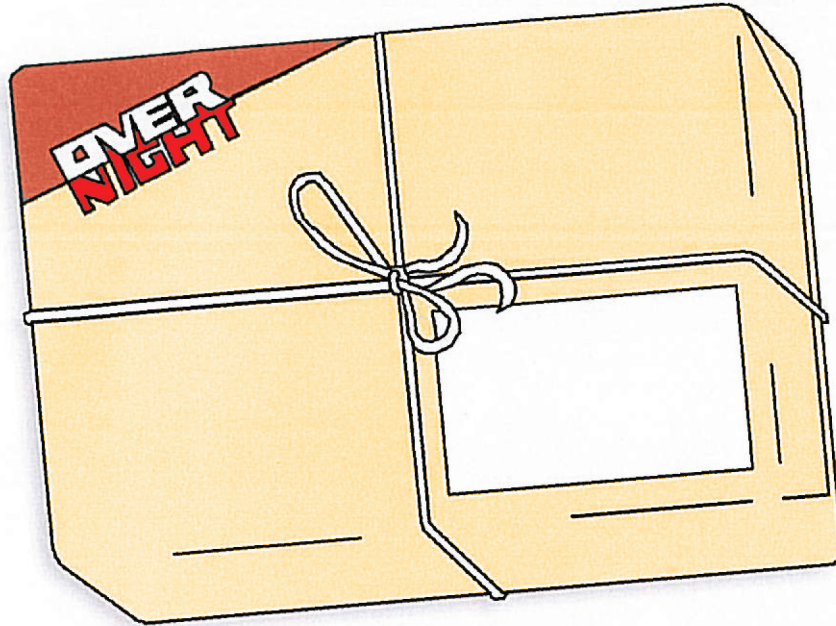


614

## Interchangeable Core Products

Interchangeable with: **BEST • ARROW • FALCON**

# KSP



### **Terms**

Net 30 Days

**Ship Pre-Paid**

On Orders \$1,500.00 or More

**10% Restocking Charge on returns**

**\$50.00 Minimum Order**



**Made in  
the USA**



**Interchangeable Core Products**

*Interchangeable with: BEST • ARROW • FALCON*

## **Killeen Security Products**

**Killeen Machine Tool Co., Inc.**

**33 Hermon Street**

**Worcester, MA 01610**

**1-800-577-5397 • [www.iccore.com](http://www.iccore.com)**

**e-mail: [sales@iccore.com](mailto:sales@iccore.com)**

**phone: 508-798-3200 • fax: 508-753-2183**

### **About Killeen Security Products**

In 1983, Norman Doucet and Doug Maston became business partners and created KSP. Within a year of its concept, KSP shipped its first order. Now, over 25 years later, KSP has built a strong reputation in the security industry and its products can be found all over the world. Both Norman and Doug have since passed away, but we believe that they would be proud of all of us for continuing their dreams for KSP.

Located in Worcester, Massachusetts, KSP manufactures over 15 different keyways for Small Format Interchangeable Core products that are interchangeable with Best, Arrow and Falcon. We have key blanks available for every keyway we supply. KSP manufactures Mortise housings that have both the staked-on and screw-on cams available. We now offer a Large Format Housing that accepts the "Schlage" large format cores. We supply locksmith tools such as capping blocks, housing wrenches and staking tools.

Whatever levels of complexity your business requires, your security and satisfaction are our foremost concerns.



**Gene Degre**

*President*

*Killeen Security Products*



**Karen Zawalich**

*Sales & Marketing*

*Killeen Security Products*

**Quality • Price • Delivery • That's what KSP is all about!**